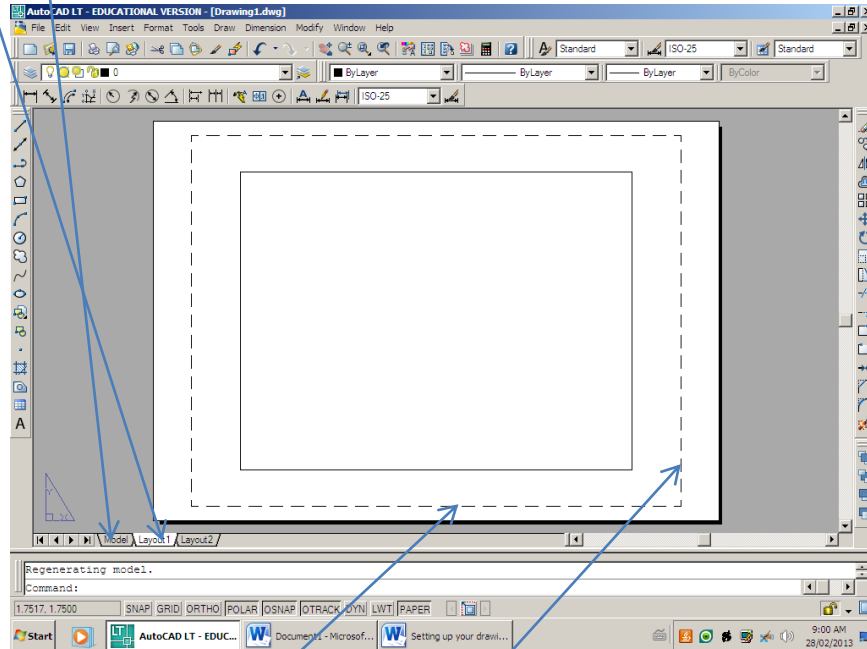


## Setting up your drawing in Model and Paper Space

- **Model space** is intended to put your drawings in actual size (life size), be sure to set up your Units and your dimensions before you get started. Units to Millimetres or Architecture as well as dimensions. Dimension features have to look appropriate.
- **Paper space** is where you will set up your paper size and plot parameters. You may be required in industry to set up different size plots depending on the contract.



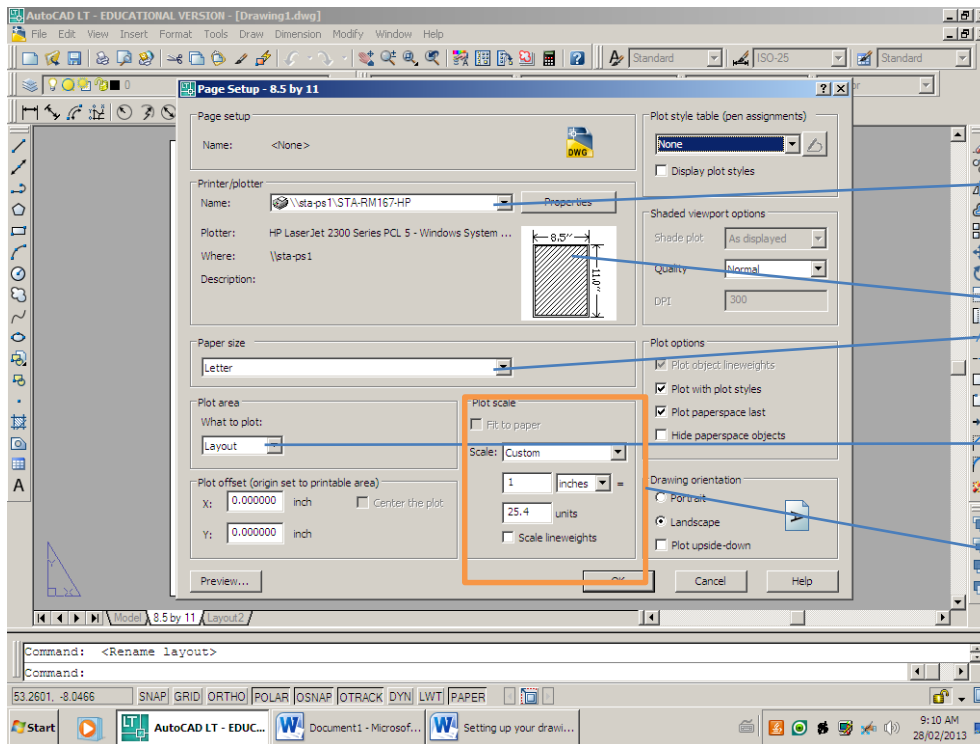
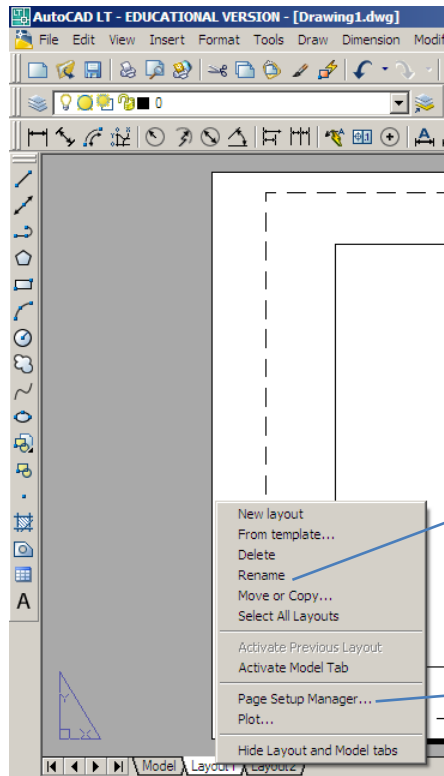
Like Geography, stay in the lines! Anything outside will not be plotted.

Put Template just inside the dotted lines. The size of your box will depend on your paper size. 8.5 by 11 should be \_\_\_\_\_

Template size: 265 by 190 starting JUST above 0,0

You will need 3 layers

1. Dimension layer, all dimensions will be put on here.
2. Model layer, put on Model lines on here.
3. Template layer, in paper space on a separate layer.



Information on plot

Setup for printer in room

Setup for plot or paper size (letter A, B etc.)

Actual scale is done for you and is the proper scale, opposed to plotting in Model space

I want your first drawing plotted on papers well show me your layers on the computer. Gr12 use legal.